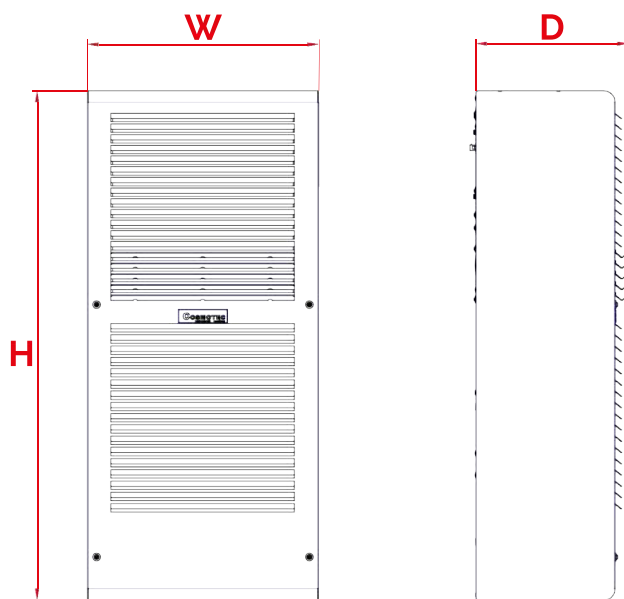
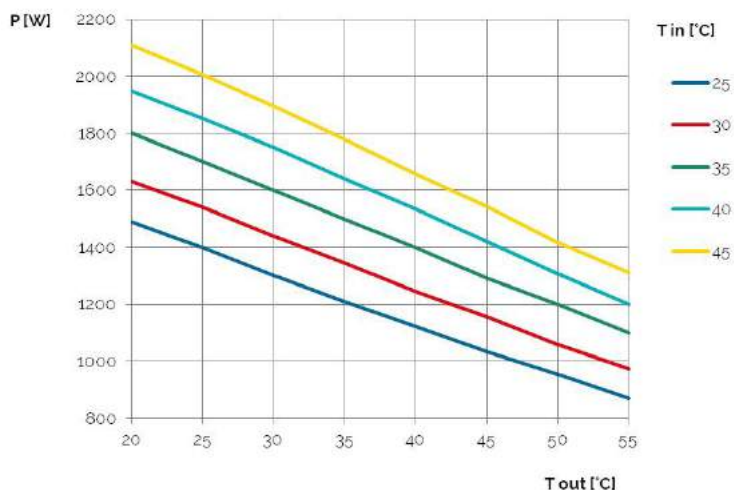


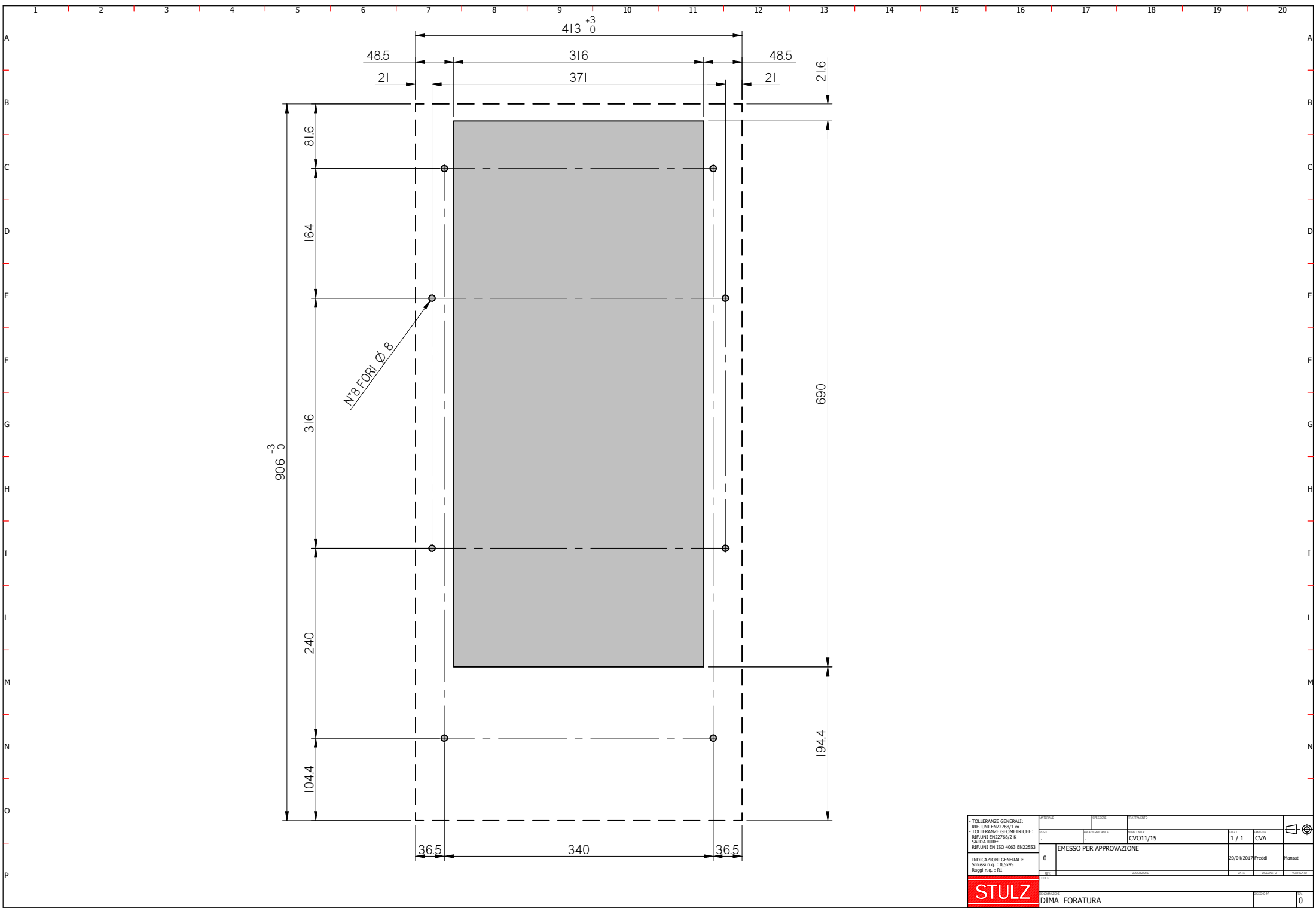


Protherm Outdoor - CVO15

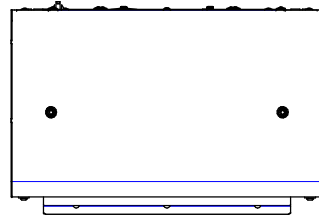
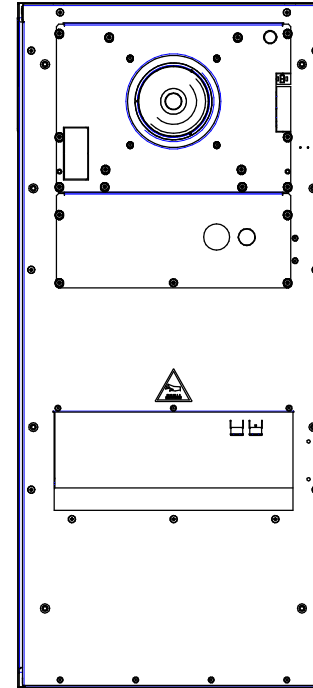
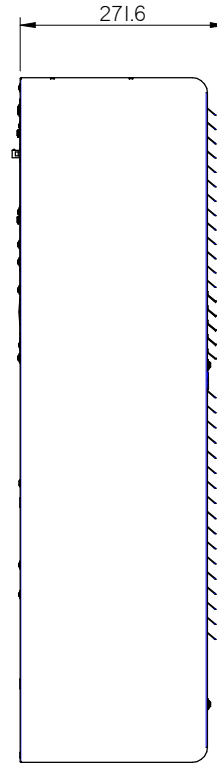
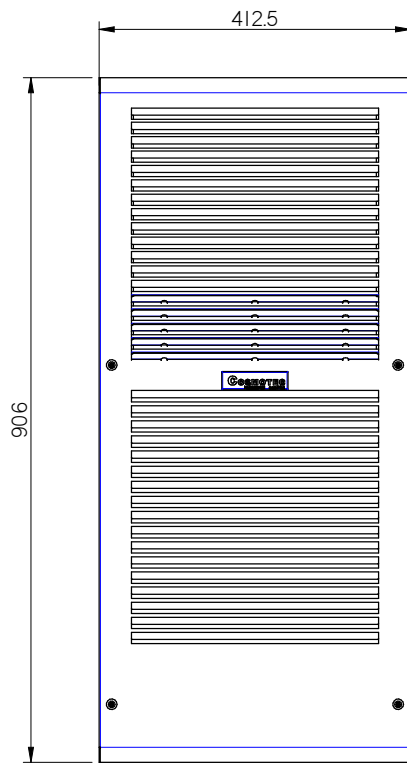


CODICE - CODE - ARTIKELNUMMER - CODIGO	M.U.	CVO15002208000	CVO15002288000	CVO15U12038000	CVO15U12208000	CVO15U12628000
Potenza di raffreddamento - Cooling Capacity - Kälteleistung - Capacidad de refrigeración L35L35 - EN14511-2	W	1500 - 1600	1400 - 1500	1600	1600	1500
Potenza di raffreddamento - Cooling Capacity - Kälteleistung - Capacidad de refrigeración L35L50 - EN14511-2	W	1200 - 1280	1150 - 1200	1280	1280	1200
UL		--	--	•	•	•
Alimentazione - Power Supply - Spannungsversorgung - Alimentación eléctrica	V-ph-Hz	230-1-50/60	400-2-50 460-2-60	115-1-60	230-1-50/60	400-3-50 460-3-60
Altezza/Larghezza/Profondità - Height/width/Depth - Höhe/Breite/Tiefe Altura/Ancho/Profundidad (HxWxD)	mm	906x412,5x271,5	906x412,5x271,5	906x412,5x271,5	906x412,5x271,5	999x412,5x286
Corrente assorbita - absorbed current - Stromaufnahme - Corriente absorbida (I)	A	3,9 / 4,3	2,5 / 2,6	9,4	4,5	2,37
Corrente assorbita alla partenza - Starting Current - Anlaufstrom - Corriente de arranque	A	28	110	50	28	20
Fusibile T - T PreFuse - Absicherung - Fusibile T	A	8	6	15	15	15
Potenza Assorbita - Power Consumption - Leistungsaufnahme - Potencia Absorbida L35L50-EN14511-2	W	750 - 825	750 - 825	825	825	890
Limiti regolazione Temperatura - Cabinet Temperature Limits - Temperatur Einstellbereich - Limites de temperatura en el armario	°C	+25 / +45	+25 / +45	+25 / +45	+25 / +45	+25 / +45
Limiti Temperatura lato Ambiente - Ambient Temperature Limits - Grenzwerte Umgebungstemperatur - Limites de temperatura ambiente	°C	-20 / +55	-20 / +55	-40 / +55	-40 / +55	-40 / +55
Protezione lato armadio - Cabinet Protection Degree - Schutzgrad Schrankseite - Clase de protección del armario	IP/Type	54 / -	54 / -	- / 4	- / 4	- / 4
Rumorosità - Noise Level - Geräuschpegel - Nivel de ruido	dB(A)	65	65	65	65	65
Peso - Weight - Gewicht - Peso	kg	46	53	46	46	48v

(1) (CE- L35L35 - UL = Max)



-TOLLERANZE GENERALI: REF. UNI EN27681-1-01 -TOLLERANZE GEOMETRICHE: REF. UNI EN22768/2-K -SALDATURE: REF. UNI EN ISO 4063 EN2553		REFERENCE DIMENSIONI CVO11/15	DATA 1 / 1 CVA	DATA 20/04/2017 Freddi Marzati
-INDICAZIONI GENERALI: Simboli n. q. : 0,5x45 Raggi n. q. : R1		EMESSE PER APPROVAZIONE		
STULZ		DIMA FORATURA		



-TOLLERANZE GENERALI: REF. UNI EN27681-1-01		PRODOTTORE	DISTRIBUTORE			
-TOLLERANZE GEOMETRICHE: REF. UNI EN27681-2-K		MOD. PUNTEGGIO	CVA			
-SALDATURE: REF. UNI EN ISO 4063 EN25533		0,6 kg	CVO11-15	1 / 1	CVA	
-INDICAZIONI GENERALI: Simboli n. q. : 0,5x45 Raggi n. q. : R1		1	MOD. QUOTA ERA 410 (C6)		19/12/2016	
		REV.	DESCRIZIONE	DATA	DESSINATO	VERIFICATO
		0001				
		DIMENSIONI LAT-OUT			PAG. 1 1	