

ENSTO



WPCP303013T

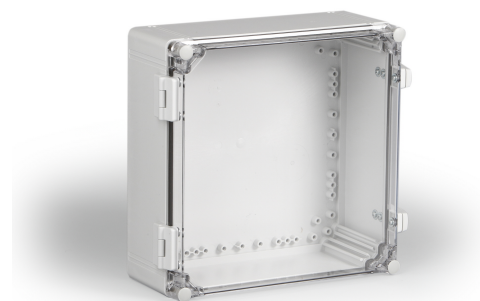
Cabinet wall installation PC

Available from the UK's premier enclosure distributor, iLECSYS Ltd,
01844 397300
sales@ilecsys.co.uk

Code	WPCP303013T
GTIN	6418677174414
Name	Cabinet wall installation PC Ensto Cubo W Size 300 x 300 x 132, with hinges and latches, transparent cover, PC
Description	Ensto Cubo W is a series of wall-mounted cabinets that have pre-assembled hinges and quick release latches. The cabinets can be easily sealed or locked either by screw-locking them or with a padlock. The series is based on the enclosure series Ensto Cubo O and C.
Vendor	Ensto Finland Oy

Services available from iLECSYS

- ✓ CNC Machining
- ✓ CNC Thread Milling
- ✓ Screen Printing
- ✓ Full Assembly



Technical specification

Others

Content: Enclosure base, cover, mounting screws

Ratings

Degree of protection: IP66/IP67
Flammability rating: UL 746C 5 inch flame test

Dimensions

Depth: 132 mm
Height: 300 mm
Inner depth: 115 mm
Net Weight: 1.85 kg
Outer cover height: 30 mm
Size: 300 x 300 x 132
Volume : 1188 cm³
Weight: 1.85 kg
Width: 300 mm

Mechanical

Impact strength: IK 08

Certificates

Standards: GOST R,EN 62208

ETIM

Etim

Colour:	Grey
Degree of protection (IP):	IP67
Depth:	132 mm
Height:	300 mm
Impact strength:	IK08
Material:	Plastic
Mounting plate depth-adjustable:	True
RAL-number:	7035
Suitable for outdoor set-up:	True
Surface finishing:	Untreated
Wall fastening possible:	True
With glazed door:	True

Packaging

Default package

Unit:	PCE
Package size:	1
Depth:	331 mm
Width:	331 mm
Height:	208 mm
Weight:	2.10 kg
Volume:	22.79 l