

# ENSTO



OABP303013T

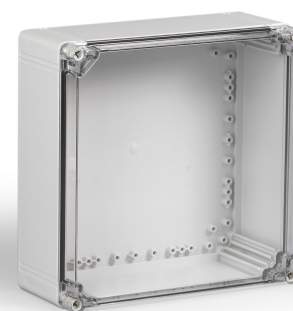
Enclosure ABS

Available from the UK's premier enclosure distributor, iLECSYS Ltd,  
01844 397300  
sales@ilecsys.co.uk

|             |   |
|-------------|---|
| Code        | OABP303013T   |
| GTIN        | 6418677184512   |
| Name        | Enclosure ABS Ensto Cubo O<br>Size 300 x 300 x 132 mm, plain sides,<br>transparent cover, ABS   |
| Description | Ensto Cubo O is a series of medium to large size enclosures available with plain sides or metric knockouts. Special features of the series allow mounting the cover onto the back of the base and include adjustable elevators for the base corner slots, enabling plates and panels to be mounted at any height. |
| Vendor      | Ensto Finland Oy  |

#### Services available from iLECSYS

- ✓ CNC Machining
- ✓ CNC Thread Milling
- ✓ Screen Printing
- ✓ Full Assembly



## Technical specification

### Mechanical

Impact strength: IK 08/IK 07

### Ratings

Degree of protection: IP66/IP67

### Others

Content: Enclosure base, cover, cover screws, mounting screws

### Certificates

Standards: EN 62208, GOST R

### Dimensions

Size: 300 x 300 x 132  
Depth: 132 mm  
Volume : 1188 cm<sup>3</sup>  
Height: 300 mm  
Inner depth: 115 mm

|                     |         |
|---------------------|---------|
| Width:              | 300 mm  |
| Weight:             | 1.57 kg |
| Outer cover height: | 30 mm   |

## ETIM

---

### etim

|                                  |           |
|----------------------------------|-----------|
| Impact strength:                 | IK08      |
| RAL-number:                      | 7035      |
| Surface finishing:               | Untreated |
| Colour:                          | Grey      |
| Material:                        | Plastic   |
| Degree of protection (IP):       | IP67      |
| Wall fastening possible:         | True      |
| Suitable for outdoor set-up:     | True      |
| Mounting plate depth-adjustable: | True      |
| With glazed door:                | True      |
| Depth:                           | 132 mm    |
| Height:                          | 300 mm    |

## Packaging

---

### Default package

|               |         |
|---------------|---------|
| Unit:         | PCE     |
| Package size: | 1       |
| Depth:        | 331 mm  |
| Width:        | 331 mm  |
| Height:       | 208 mm  |
| Weight:       | 1.82 kg |
| Volume:       | 22.79 l |