

# ENSTO



CPCF303013T

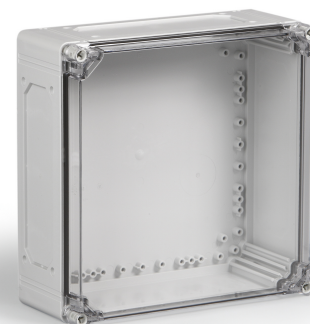
Enclosure PC

Available from the UK's premier enclosure distributor, iLECSYS Ltd,  
01844 397300  
sales@ilecsys.co.uk

Code	CPCF303013T
GTIN	6418677172229
Name	Enclosure PC Ensto Cubo C Size 300 x 300 x 132 mm, flange knockouts, transparent cover, PC
Description	Ensto Cubo C is a series of medium to large size enclosures available with flange knockouts. Special features of the series allow mounting the cover onto the back of the base and include adjustable elevators for the base corner slots, enabling plates and panels to be mounted at any height.
Vendor	Ensto Finland Oy

#### Services available from iLECSYS

- ✓ CNC Machining
- ✓ CNC Thread Milling
- ✓ Screen Printing
- ✓ Full Assembly



## Technical specification

### Colors

Color: Grey

### Others

Content: Enclosure base, cover, cover screws, mounting screws

### Ratings

Degree of protection: IP66/IP67  
Flammability rating: UL 746C 5 inch flame test

### Dimensions

Depth: 132 mm  
Height: 300 mm  
Inner depth: 115 mm  
Net Weight: 1.74 kg  
Outer cover height: 30 mm  
Size: 300 x 300 x 132  
Volume : 1188 cm<sup>3</sup>  
Weight: 1.74 kg

Width: 300 mm

## Mechanical

Impact strength: IK 08

## Features

Knockouts: 4 x F2 knockout

## Certificates

Standards: EN 62208,GOST R

## ETIM

---

### Etim

Colour: Grey

Degree of protection (IP): IP67

Depth: 132 mm

Height: 300 mm

Impact strength: IK08

Material: Plastic

Mounting plate depth-adjustable: True

RAL-number: 7035

Suitable for outdoor set-up: True

Surface finishing: Untreated

Wall fastening possible: True

With glazed door: True

## Packaging

---

### Default package

Unit: PCE

Package size: 1

Depth: 331 mm

Width: 331 mm

Height: 208 mm

Weight: 1.99 kg

Volume: 22.79 l