

ENSTO



CPCF202018T

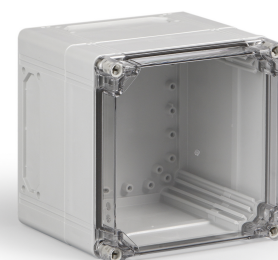
Enclosure PC

Available from the UK's premier enclosure distributor, iLECSYS Ltd,
01844 397300
sales@ilecsys.co.uk

Code	CPCF202018T
GTIN	6418677182235
Name	Enclosure PC Ensto Cubo C Size 200 x 200 x 185 mm, flange knockouts, transparent cover, PC
Description	Ensto Cubo C is a series of medium to large size enclosures available with flange knockouts. Special features of the series allow mounting the cover onto the back of the base and include adjustable elevators for the base corner slots, enabling plates and panels to be mounted at any height.
Vendor	Ensto Finland Oy

Services available from iLECSYS

- ✓ CNC Machining
- ✓ CNC Thread Milling
- ✓ Screen Printing
- ✓ Full Assembly



Technical specification

Colors

Color: Grey

Others

Content: Enclosure base, cover, extension frame, cover screws, mounting screws, screws for the extension frame

Ratings

Degree of protection: IP66/IP67
Flammability rating: UL 746C 5 inch flame test

Dimensions

Depth: 187 mm
Height: 200 mm
Inner depth: 170 mm
Net Weight: 1.37 kg
Outer base depth: 157 mm
Outer cover height: 30 mm
Size: 200 x 200 x 187

Volume :	740 cm ³
Weight:	1.37 kg
Width:	200 mm

Mechanical

Impact strength:	IK 08
------------------	-------

Features

Knockouts:	4 x B-flange knockout
------------	-----------------------

Certificates

Standards:	GOST R,EN 62208
------------	-----------------

ETIM

Etim

Colour:	Grey
Degree of protection (IP):	IP67
Depth:	187 mm
Height:	200 mm
Impact strength:	IK08
Material:	Plastic
Mounting plate depth-adjustable:	True
RAL-number:	7035
Suitable for outdoor set-up:	True
Surface finishing:	Untreated
Wall fastening possible:	True
With glazed door:	True

Packaging

Default package

Unit:	PCE
Package size:	1
Depth:	256 mm
Width:	231 mm
Height:	208 mm
Weight:	1.52 kg
Volume:	12.30 l