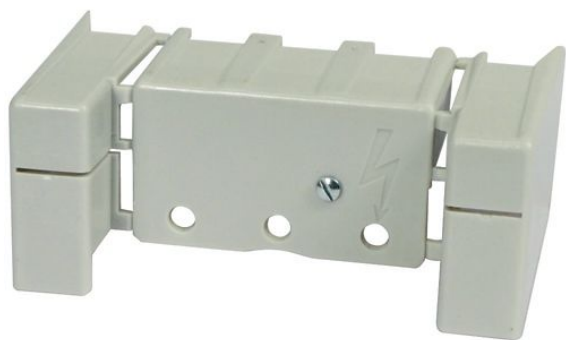


Specifications



Eaton 019626

Eaton Moeller® series Terminal shroud, 4p,
for switch-disconnector P14

General specifications

PRODUCT NAME	Eaton Moeller® series Accessory Terminal shroud
CATALOG NUMBER	019626
MODEL CODE	H-P14
EAN	4015080196266
PRODUCT LENGTH/DEPTH	80 mm
PRODUCT HEIGHT	25 mm
PRODUCT WIDTH	40 mm
PRODUCT WEIGHT	0.022 kg
CERTIFICATIONS	UL/CSA certification not required



Powering Business Worldwide

Climatic environmental conditions

AMBIENT OPERATING TEMPERATURE - MAX 50 °C

AMBIENT OPERATING TEMPERATURE - MIN -25 °C

Design verification

10.10 TEMPERATURE RISE Not applicable.

10.11 SHORT-CIRCUIT RATING Is the panel builder's responsibility. The specifications for the switchgear must be observed.

10.12 ELECTROMAGNETIC COMPATIBILITY Is the panel builder's responsibility. The specifications for the switchgear must be observed.

10.13 MECHANICAL FUNCTION The device meets the requirements, provided the information in the instruction leaflet (IL) is observed.

10.2.2 CORROSION RESISTANCE Meets the product standard's requirements.

10.2.3.1 VERIFICATION OF THERMAL STABILITY OF ENCLOSURES Meets the product standard's requirements.

10.2.3.2 VERIFICATION OF RESISTANCE OF INSULATING MATERIALS TO NORMAL HEAT Meets the product standard's requirements.

10.2.3.3 RESIST. OF INSUL. MAT. TO ABNORMAL HEAT/FIRE BY INTERNAL ELECT. EFFECTS Meets the product standard's requirements.

10.2.4 RESISTANCE TO ULTRA-VIOLET (UV) RADIATION Meets the product standard's requirements.

10.2.5 LIFTING Does not apply, since the entire switchgear needs to be evaluated.

10.2.6 MECHANICAL IMPACT Does not apply, since the entire switchgear needs to be evaluated.

10.2.7 INSCRIPTIONS Meets the product standard's requirements.

10.3 DEGREE OF PROTECTION OF ASSEMBLIES Does not apply, since the entire switchgear needs to be evaluated.

10.4 CLEARANCES AND CREEPAGE DISTANCES Meets the product standard's requirements.

10.5 PROTECTION AGAINST ELECTRIC SHOCK Does not apply, since the entire switchgear needs to be evaluated.

10.6 INCORPORATION OF SWITCHING DEVICES AND COMPONENTS Does not apply, since the entire switchgear needs to be evaluated.

10.7 INTERNAL ELECTRICAL CIRCUITS AND CONNECTIONS	Is the panel builder's responsibility.
10.8 CONNECTIONS FOR EXTERNAL CONDUCTORS	Is the panel builder's responsibility.
10.9.2 POWER-FREQUENCY ELECTRIC STRENGTH	Is the panel builder's responsibility.
10.9.3 IMPULSE WITHSTAND VOLTAGE	Is the panel builder's responsibility.
10.9.4 TESTING OF ENCLOSURES MADE OF INSULATING MATERIAL	Is the panel builder's responsibility.
EQUIPMENT HEAT DISSIPATION, CURRENT-DEPENDENT PVID	0 W
HEAT DISSIPATION CAPACITY PDISS	0 W
HEAT DISSIPATION PER POLE, CURRENT-DEPENDENT PVID	0 W
RATED OPERATIONAL CURRENT FOR SPECIFIED HEAT DISSIPATION (IN)	0 A
STATIC HEAT DISSIPATION, NON-CURRENT-DEPENDENT PVS	0 W

Features & functions

FUNCTIONS	Can be optionally used for input wiring and/or outgoer
------------------	--

General information

ACCESSORIES	Shroud for connection terminals for (busbar tag shroud)
ACCESSORY/SPARE PART TYPE	Cover
TYPE	Terminal cover

Resources

BROCHURES	Brochure - T Rotary Cam switch and P Switch-disconnector
CATALOGUES	P Switch-disconnectors and T Rotary cam switches catalogue CA042001EN
DRAWINGS	eaton-rotary-switches-cover-terminal-shroud-dimensions.eps eaton-rotary-switches-shroud-terminal-shroud-3d-drawing-003.eps eaton-rotary-switches-cover-terminal-shroud-3d-drawing.eps
ECAD MODEL	eaton-accessory-terminal-shroud-eplan-019626.edz
INSTALLATION VIDEOS	Eaton's P Switch-disconnectors used in a factory
MCAD MODEL	DA-CS-zz04 eaton-rotary-disconnect-accessories-mcad-drawings-zz04.dwg

PROJECT NAME:

PROJECT NUMBER:

PREPARED BY:

DATE:



Eaton Corporation plc Eaton House
30 Pembroke Road
Dublin 4, Ireland
Eaton.com

© 2026 Eaton. All Rights Reserved.

Follow us on social media to get the latest product and support information.

