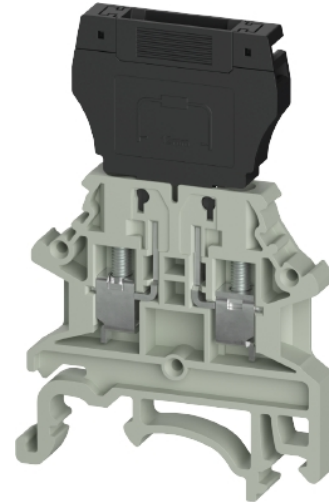


Data sheet

Commercial Art.No.: 5D.S03.4055.0

connector disconnect terminal WTN 2.5 TKG

connector disconnect terminal WTN 2.5 TKG rated voltage 400 V, rated current 6 A, screw connection, number of levels 1, number of clamp positions per level 2, nominal cross section 2.5 mm², connectable conductor cross section fine stranded without cable end sleeve 0,34mm² - 2,5mm², mounting method DIN rail (top hat rail), color grey, width/grid dimension 5.1 mm, inflammability class of insulation material acc. with ul94 V0



Commercial Art.No.	5D.S03.4055.0
EAN	4049088724466
Order Unit	100

certificates / approvals



Technical data

general

nominal cross section	2.5 mm ²
color	grey
number of levels	1
number of clamp positions per level	2
width/grid dimension	5.1 mm
insulating housing	PA
inflammability class of insulation material acc. with UL94	V0
mounting method	DIN rail (top hat rail)
Anschlussart	screw connection
Anzahl der Klemmstellen je Etage	2
Montageart	DIN rail (top hat rail)
Brennbarkeitsklasse des Isolierstoffs	V0
halogen free	yes

technical data

rated current	6 A
rated voltage	400 V
rated impulse voltage	6 kV
pollution degree	3
closing plate required	yes
type of insulation material	thermoplastic
length	40.7 mm

width	5.1 mm
height	63 mm

connection data

connection type	screw connection
connection type 1	screw connection
minimum cross section solid	0.34 mm ²
maximum cross section solid	2.5 mm ²
minimum cross section fine stranded	0.34 mm ²
maximum cross section fine stranded	2.5 mm ²
minimum conductor cross section (flex., stranded) with cable end sleeve	0.25 mm ²
maximum conductor cross section (flex., stranded) with cable end sleeve	2.5 mm ²
wire strip length	10 mm
torque conductor mounting	0.4 Nm

technical data UL/CSA

cross section UL	22-12 AWG
voltage UL	300 V
current factory wiring	6 A
current field wiring	6 A
cross section CSA	22-12 AWG
voltage CSA	300 V
current CSA	6 A

classification

ETIM 9.0	EC000902
----------	----------

product compliance

ROHS conformity status	compliant
REACH-SVHC conformity status	compliant

Accessories

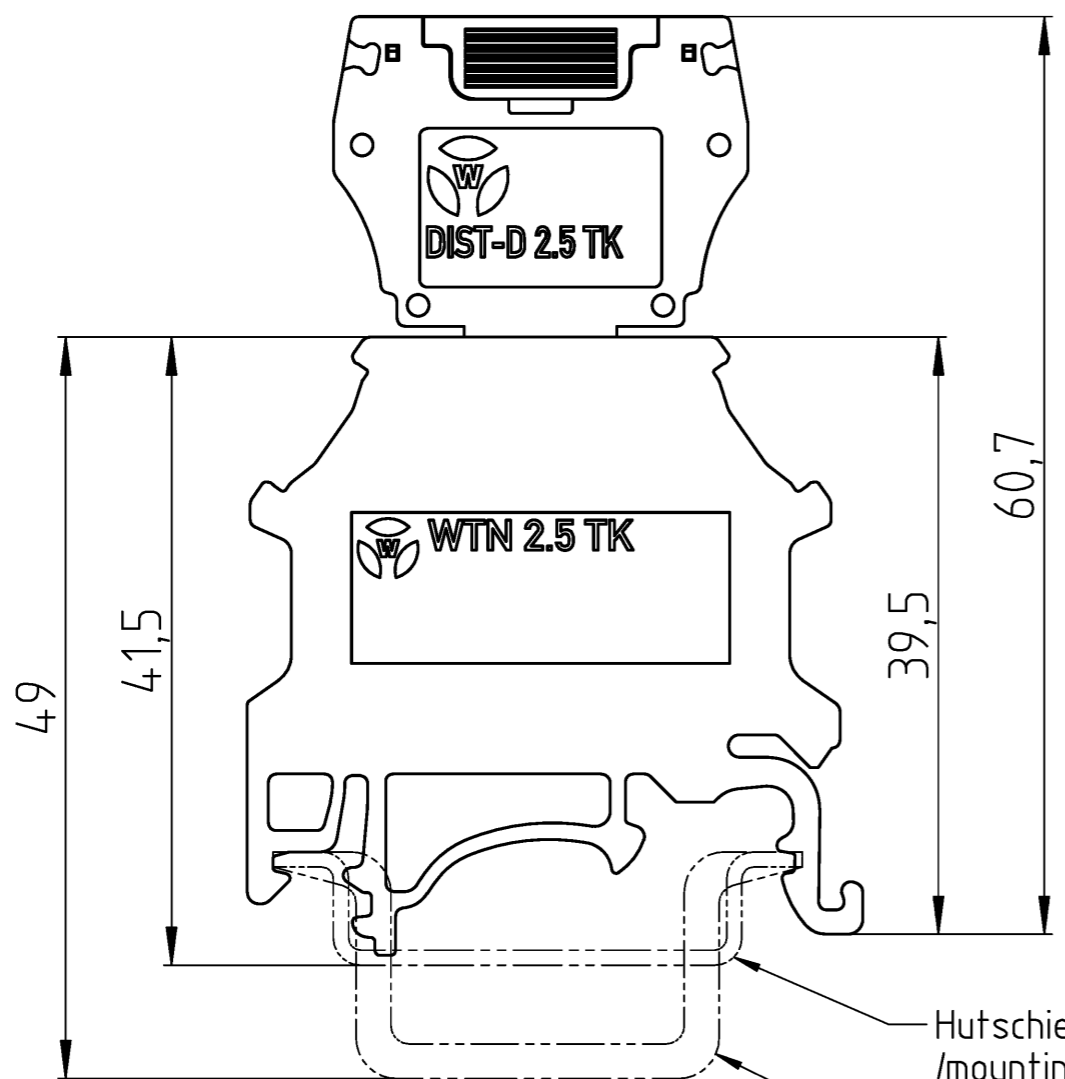
Commercial Art.No.:	Article-type description:	Description:
0D.S04.2055.0	end plate APWTN 2.5/4	end plate inflammability class of insulation material acc. with ul94 V0, type of end plate yes, thickness 1.2 mm, length 39.2 mm, color grey
0D.202.7281.0	marking strips WML 9.8/60	marking strips WML 9.8/60 material plastic, color white, length 230 mm, height 15.1 mm, inflammability class of insulation material acc. with ul94 V0
0D.203.7056.0	marking plate WMP 5,10-10	marking plate WMP 5,10-10 modular spacing 5.1 mm, material plastic, color white, length 128 mm, height 76 mm, inflammability class of insulation material acc. with ul94 V0
0D.S23.3227.0	insert bridge IVB WTN 2.5-2 IN	insert bridge IVB WTN 2.5-2 IN modular spacing 5.1 mm, insulated yes, number of poles 2, color grey, height 19 mm, mounting method screwable, inflammability class of insulation material acc. with ul94 V0
0D.S23.3327.0	insert bridge IVB WTN 2.5-3 IN	insert bridge IVB WTN 2.5-3 IN modular spacing 5.1 mm, insulated yes, number of poles 3, color grey, height 19 mm, mounting method screwable, inflammability class of insulation material acc. with ul94 V0

0D.S23.3427.0	insert bridge IVB WTN 2.5-4 IN	insert bridge IVB WTN 2.5-4 IN modular spacing 5.1 mm, insulated yes, number of poles 4, color grey, height 19 mm, mounting method screwable, inflammability class of insulation material acc. with ul94 V0
0D.S23.3527.0	insert bridge IVB WTN 2.5-5 IN	insert bridge IVB WTN 2.5-5 IN modular spacing 5.1 mm, insulated yes, number of poles 5, color grey, height 19 mm, mounting method screwable, inflammability class of insulation material acc. with ul94 V0
0D.S23.4027.0	insert bridge IVB WTN 2.5-10 IN	insert bridge IVB WTN 2.5-10 IN modular spacing 5.1 mm, insulated yes, number of poles 10, color grey, height 19 mm, mounting method screwable, inflammability class of insulation material acc. with ul94 V0

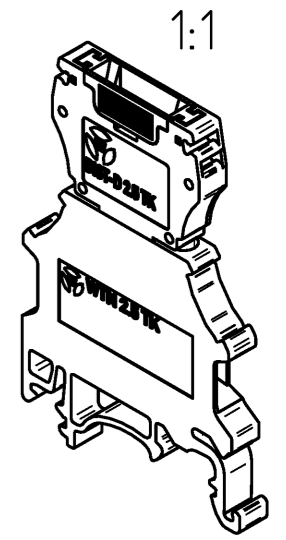
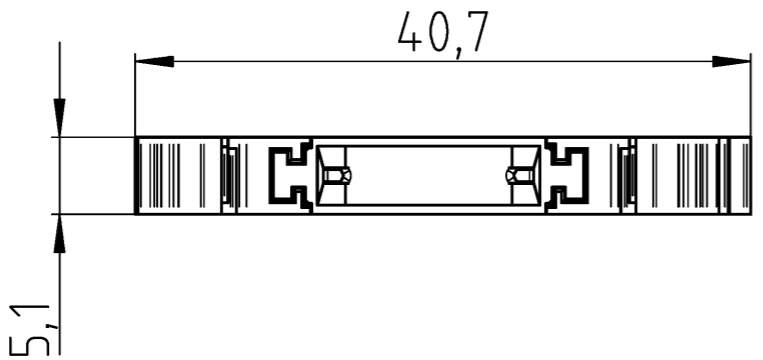
Alle Rechte vorbehalten
 All rights reserved
 Vertraulichkeitsklasse
 Confidentiality Class: Vertraulich
 Confidential

These dimensions will be especially checked at delivery
 Only inspection dimensions
 With /E marked dimensions are only valid for internal use

Diese Maße werden bei Abnahme besonders geprüft
 Ausschließlich Prüfmaße
 Mit /E gekennzeichnete Maße sind nur für interne Zwecke gültig



Hutschiene EN 60715-35x7,5
 /mounting rail EN 60715-35x7,5
 Hutschiene EN 60715-35x15
 /mounting rail EN 60715-35x15



Weitere Daten siehe KATALOG oder eKatalog
 additional data see CATALOG or eCATALOG
www.wieland-electric.com
eshop.wieland-electric.com

Tolerierung Size ISO 14405 © / Tolerance system Size ISO 14405 ©. ja/yes Stoffverbots- und Deklarationsliste nach WN 5020.010 ist einzuhalten.
 (This ISO-standard describes the envelope principle. According to the envelope principle the deviations of form and parallelism are limited by the size tolerances). Conformity with Wieland document WN 5020.010 e (list of prohibited / declarable hazardous substances) to be declared!

Freitoleranz nach General tolerance CAD - Zeichnung, keine manuellen Änderungen CAD - drawing, no manual modifications allowed 1. Verwendung: First Use: Blatt: 1 von 1 Sheet: 1 of 1

		Werkstoff / Material		Tag/Date	Name	Zeichnung Nr. / Drawing No.		Index
				gezeichnet drawn	16.09.2025	Sachs (extern)		
		Maßstab / Scale		Elektronische Freigabe Electronic Release		T 5D.S03.4055.0 13K		
		Vol. mm ³ / OfL./Srf. mm ²		Ersatz für / Replacement for:		Maße in mm / Dimensions are in mm		
		Index Datum / Blatt Date / Sheet		Type		Benennung/Title		
		Änderung / Revision		wieland		VERBINDER TRENNKLEMME		
						connector disc. terminal		

Bestell-Nr. /order no.	Typ /type	Farbe /colour	VPE: packaging unit:
5D.S03.4055.0	WTN 2.5 TKG	grau / grey	100
5D.S03.4055.5	WTN 2.5 TKG RT	rot / red	
5D.S03.4055.6	WTN 2.5 TKG BL	blau / blue	