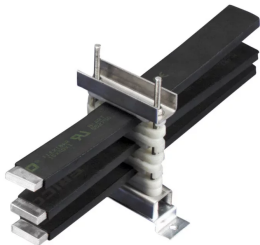


# RFS Reinforced nVent ERIFLEX Flexibar Support



## CERTIFICATIONS



## FEATURES

Supports up to eight conductors in parallel

Ensures correct spacing for optimum cooling

Easy to install

Spacers are halogen free

RoHS compliant

## SPECIFICATIONS

**Material:** Stainless Steel 304 (EN 1.4301);Polyamide

Table 1/3

Catalog Number	Article Number	Conductor Width	Depth (D)	Height (H)	Width (W)	Hole Size (HS)
RFS80-100	553380	80 - 100 mm	40mm	210 mm	225 mm	9 mm
RFS40-63	553370	40 - 63 mm	40mm	210 mm	175 mm	9 mm

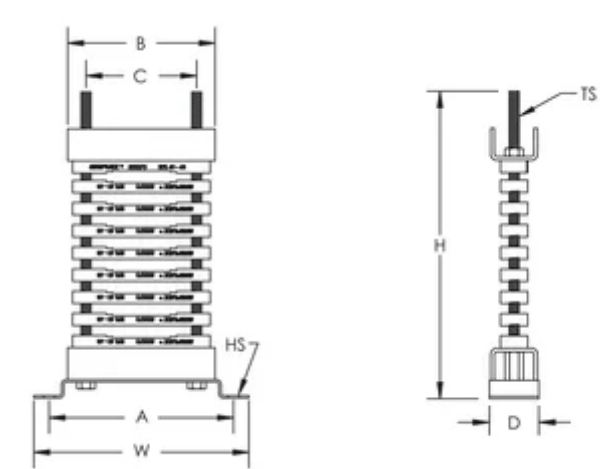
Table 2/3						
Catalog Number	Article Number	Thread Size (TS)	A	B	C	Unit Weight
RFS80-100	553380	M10	200 mm	170 mm	140 mm	1.43 kg
RFS40-63	553370	M8	150 mm	120 mm	90 mm	0.93 kg

Table 3/3		
Catalog Number	Article Number	Certifications
RFS80-100	553380	RoHS
RFS40-63	553370	RoHS, CE, ERIFLEX IFBS

### ADDITIONAL PRODUCT DETAILS

Recommended distance between supports is 400 mm (15 3/4").

### DIAGRAMS



### WARNING

nVent products shall be installed and used only as indicated in nVent's product instruction sheets and training materials. Instruction sheets are available at [www.nvent.com](http://www.nvent.com) and from your nVent customer service representative. Improper installation, misuse, misapplication or other failure to completely follow nVent's instructions and warnings may cause product malfunction, property damage, serious bodily injury and death and/or void your warranty.

#### North America

+1.800.753.9221

Option 1 – Customer Care

Option 2 – Technical

Support

#### Europe

Netherlands:

+31 800-0200135

France:

+33 800 901 793

#### Europe

Germany:

800 1890272

Other Countries:

+31 13 5835404

#### APAC

Shanghai:

+ 86 21 2412 1618/19

Sydney:

+61 2 9751 8500



Our powerful portfolio of brands:

**CADDY**

**ERICO**

**HOFFMAN**

**ILSCO**

**SCHROFF**

**TRACHTE**