



Color: ■ gray

Electrical data

Ratings per IEC/EN	
Rated current	24 A

Physical data

Width	10 mm / 0.394 inches
Height	4 mm / 0.157 inches
Depth	19.2 mm / 0.756 inches
Jumper assignment	1-2

Material data

Note (material data)	Information on material specifications can be found here
Color	gray
Insulation material (main housing)	Polyamide (PA66)
Fire load	0.006 MJ
Weight	1.1 g

Commercial data

PU (SPU)	200 (25) pcs
Packaging type	Box
Country of origin	DE
GTIN	4044918683845
Customs tariff number	85366990990



Product Classification		
UNSPSC		39121421
eCl@ss 10.0		27-14-11-40
eCl@ss 9.0		27-14-11-40
ETIM 9.0		EC000489
ETIM 8.0		EC000489
ECCN		NO US CLASSIFICATION

Environmental Product Compliance	
RoHS Compliance Status	Compliant,No Exemption

Downloads

Environmental Product Compliance	
Compliance Search	
Environmental Product Compliance 280-482	↓

Documentation

Bid Text			
280-482	19.02.2019	xml 2.54 KB	↓
280-482	27.04.2017	doc 23.50 KB	↓

CAD/CAE-Data

CAD data		CAE data	
2D/3D Models 280-482	↓	EPLAN Data Portal 280-482	↓
		WSCAD Universe 280-482	↓
		ZUKEN Portal 280-482	↓

1 Compatible Products

1.1 Optional Accessories

1.1.1 Tool

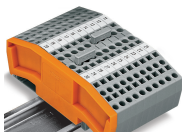
1.1.1.1 Operating tool



Item No.: 280-432
Operating tool; made of insulating material; 2-way; white

Installation Notes

Commoning



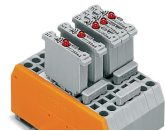
Commoning using comb-style jumper bars.
Push comb-style jumper bars down until fully inserted.

Commoning



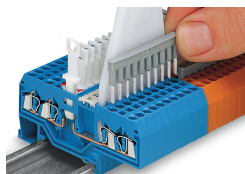
4-conductor through terminal blocks, angled type, formation of groups with 3-way, comb-style jumper bars

Commoning



Carrier terminal blocks with component plugs, alternate comb-style jumper bars, 3-way comb-style jumper bar

Commoning



Commoning front-entry disconnect terminal blocks via comb-style jumper bar using a 10-pole operating tool