



Color: ■ gray

Similar to illustration

Electrical data

Ratings per IEC/EN	
Rated current	24 A

Physical data

Width	25 mm / 0.984 inches
Height	4 mm / 0.157 inches
Depth	19.2 mm / 0.756 inches
Jumper assignment	1-2-3-4-5

Material data

Note (material data)	<a href="#">Information on material specifications can be found here</a>
Color	gray
Fire load	0.017 MJ
Weight	2.5 g

Commercial data

PU (SPU)	100 (25) pcs
Packaging type	Box
Country of origin	DE
GTIN	4045454083519
Customs tariff number	85366990990



Product Classification		
UNSPSC		39121421
eCl@ss 10.0		27-14-11-40
eCl@ss 9.0		27-14-11-40
ETIM 9.0		EC000489
ETIM 8.0		EC000489
ECCN		NO US CLASSIFICATION

Environmental Product Compliance	
RoHS Compliance Status	Compliant,No Exemption

Downloads

Environmental Product Compliance

Compliance Search

Environmental Product Compliance 280-485

↓

Documentation				
Bid Text				
280-485	27.04.2017	doc	24.00 KB	↓
280-485	19.02.2019	xml	2.54 KB	↓

CAD/CAE-Data		
CAD data		CAE data
2D/3D Models 280-485		EPLAN Data Portal 280-485
		↓
		WSCAD Universe 280-485
		↓
		ZUKEN Portal 280-485
		↓



1 Compatible Products

1.1 Optional Accessories

1.1.1 Tool

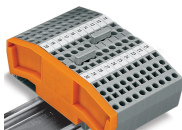
1.1.1.1 Operating tool



Item No.: 280-435  
Operating tool; made of insulating material; 5-way; gray

Installation Notes

Commoning



Commoning using comb-style jumper bars.  
Push comb-style jumper bars down until fully inserted.

Commoning



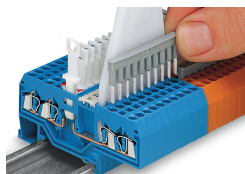
4-conductor through terminal blocks, angled type, formation of groups with 3-way, comb-style jumper bars

Commoning



Carrier terminal blocks with component plugs, alternate comb-style jumper bars, 3-way comb-style jumper bar

## Commoning



Commoning front-entry disconnect terminal blocks via comb-style jumper bar using a 10-pole operating tool