

Data sheet

Commercial Art.No.: 92.932.3053.0

connector GST18I3S S1CZR1 WS

gesis® CLASSIC connector, number of poles 3, male, connection type screw connection, rated voltage 250 V, rated current 20 A, cable diameter 6.5 - 10.5 mm, color of coding/ contact carrier white



Commercial Art.No.	92.932.3053.0
EAN	4015573721869
Order Unit	1

certificates / approvals



Technical data

general

rated current	20 A
rated voltage	250 V
rated impulse voltage	4 kV
strain relief	yes
pollution degree	2
mechanical coding	code 1
lockable	self-locking (unlocking by tool)
color of coding/ contact carrier	white
Pole codification	L, N, PE
color of housing inclusive strain relief	white
RAL-Nummer Codierung/Kontakteinsatz	9016

connection data

cable diameter max.	10.5 mm
cable diameter min.	6.5 mm
connection cross section solid mm² max.	2.5 mm²
connection cross section solid mm² min.	0.75 mm²
connection cross section fine stranded mm² max.	2.5 mm²
connection cross section fine stranded mm² min.	0.75 mm²
terminations per pole	1
sheath strip length	38.5 mm
wire strip length	7 mm

model

model	male
connection type	screw connection

degree of protection (IP)	IP40
---------------------------	------

material

housing material	polyamide
halogen free	yes
contact material	CuZn
fire load	0.093 kWh/St
insulation components continuous temperature	100 °C
surface finish	tin-plated

dimensions

length	69.4 mm
width	28.2 mm
height	12.6 mm

classification

ECLASS 11	
ECLASS 8.1	27440605
ETIM 9.0	EC002560
ETIM 8.0	EC002560
ETIM 7.0	EC002560
ETIM 6.0	EC002560
ETIM 5.0	EC002560
ETIM 4.0	EC002560

product compliance

ROHS conformity status	compliant/exempted
ROHS exceptions	III-6(c)
REACH-SVHC conformity status	Duty-To-Declare
REACH-SVHC substances	Lead
REACH-SVHC CAS numbers	7439-92-1

Accessories

Commercial Art.No.:	Article-type description:	Description:
05.587.3156.0	lock (G)ST18 WS	Locking device for cable to cable connection GST18i3-5, white
06.561.7853.0	mounting frame GST18i3 SW	Mounting frame to snap in GST18i3 connectors into a housing or furniture. Wall thickness: 1,5-2,5 mm. Holds GST18i3 connectors with screw or spring connection and pre-assembled cables.
05.561.3653.0	cover cap GST18i3VS B WS	Cover piece for female GST18i3, white
05.561.3653.1	cover cap GST18i3VS B SW	Cover piece for female GST18i3, black
05.564.5353.0	cover cap GST18i3/4/5 SW	Cover piece 12 pole black for female parts GST18i3-6
05.564.5353.2	cover cap GST18i3/4/5 WS	Cover piece 12 pole white for female parts GST18i3-6
05.594.4250.0	cover cap ST18/3B + GST18i3 ST WS	
05.594.4253.0	cover cap ST18/3B + GST18i3 ST WS	
05.587.3156.1	lock (G)ST18 SW	Locking device for cable to cable connection GST18i3-5, black

Fits with

Commercial Art.No.:	Article-type description:	Description:
---------------------	---------------------------	--------------

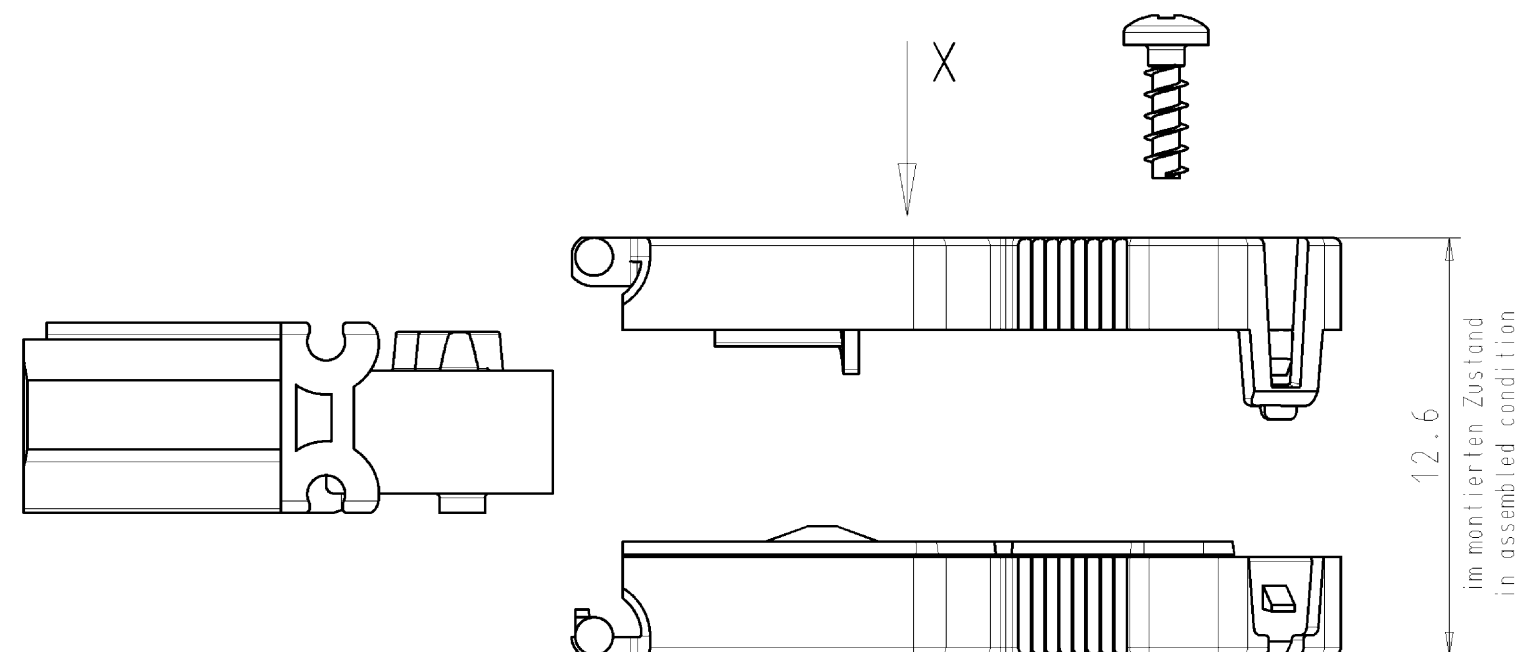
92.931.3053.0	connector GST18I3S B1CZR1 WS	geis® CLASSIC connector, number of poles 3, female, connection type screw connection, rated voltage 250 V, rated current 20 A, cable diameter 6.5 - 10.5 mm, color of coding/ contact carrier white
92.031.3258.0	device connector GST18I3S B1 WS	geis® CLASSIC device connector, built-in component, single screw connection, number of poles 3, model female, connection type screw connection, rated voltage 250 V, rated current 20 A, color of coding/ contact carrier white
92.031.0058.0	device connector GST18I3L B1V WS	geis® CLASSIC device connector, solder connector, vertical, without fastening flange, number of poles 3, model female, connection type soldering connection, rated voltage 250 V, rated current 20 A, color of coding/ contact carrier white
92.232.1007.2	cable assembly GST18I3K1BD 15 10WS	geis® CLASSIC mains connection cable, number of poles 3, rated voltage 250 V, rated current 16 A, cable type H05VV-F, fire class Eca, total length 1 m, nominal cross section conductor 1.5 mm ² , color of coding/ contact carrier white
92.031.3458.0	device connector GST18I3S B1 GR01	geis® CLASSIC device connector, built-in component, single screw connection, number of poles 3, model female, connection type screw connection, rated voltage 250 V, rated current 20 A, color of coding/ contact carrier pebble grey
92.031.0158.0	device connector GST18I3L B1V GR01	geis® CLASSIC device connector, solder connector, vertical, without fastening flange, number of poles 3, model female, connection type soldering connection, rated voltage 250 V, rated current 20 A, color of coding/ contact carrier pebble grey
92.031.3658.0	device connector GST18I3S B1 RT03	geis® CLASSIC device connector, built-in component, single screw connection, number of poles 3, model female, connection type screw connection, rated voltage 250 V, rated current 20 A, color of coding/ contact carrier salmon pink
92.031.3858.0	device connector GST18I3S B1 BR05	geis® CLASSIC device connector, built-in component, single screw connection, number of poles 3, model female, connection type screw connection, rated voltage 250 V, rated current 20 A, color of coding/ contact carrier brown
92.031.0658.0	device connector GST18I3L B1V BR05	geis® CLASSIC device connector, solder connector, vertical, without fastening flange, number of poles 3, model female, connection type soldering connection, rated voltage 250 V, rated current 20 A, color of coding/ contact carrier brown
92.232.1000.2	cable assembly GST18I3K1BS 15 10WS	geis® CLASSIC connecting cable, female - male, number of poles 3, rated voltage 250 V, rated current 16 A, cable type H05VV-F, fire class Eca, total length 1 m, nominal cross section conductor 1.5 mm ² , color of coding/ contact carrier white
92.232.1003.2	cable assembly GST18I3K1B- 15 10WS	geis® CLASSIC connection cable, female - free end, number of poles 3, rated voltage 250 V, rated current 16 A, cable type H05VV-F, fire class Eca, total length 1 m, nominal cross section conductor 1.5 mm ² , color of coding/ contact carrier white
92.232.1004.2	cable assembly GST18I3K1-S 15 10WS	geis® CLASSIC connection cable, male - free end, number of poles 3, rated voltage 250 V, rated current 16 A, cable type H05VV-F, fire class Eca, total length 1 m, nominal cross section conductor 1.5 mm ² , color of coding/ contact carrier white
92.297.1003.0	cable assembly GST18I3KSB- 15 10TR01	geis® CLASSIC connection cable, female - free end, number of poles 3, rated voltage 250 V, rated current 16 A, cable type H05VV-F, fire class Eca, total length 1 m, nominal cross section conductor 1.5 mm ² , color of coding/ contact carrier tomato red
92.031.0758.0	device connector GST18I3L B1V RT03	geis® CLASSIC device connector, solder connector, vertical, without fastening flange, number of poles 3, model female, connection type soldering connection, rated voltage 250 V, rated current 20 A, color of coding/ contact carrier salmon pink

92.031.0858.0	device connector GST18I3L B1V H RT03	geis® CLASSIC device connector, solder connector, vertical, without fastening flange, number of poles 3, connection type soldering connection, rated voltage 250 V, rated current 20 A, color of coding/ contact carrier salmon pink
92.031.0358.0	device connector GST18I3L B1V GN07	geis® CLASSIC device connector, solder connector, vertical, without fastening flange, number of poles 3, connection type soldering connection, rated voltage 250 V, rated current 20 A, color of coding/ contact carrier may green
92.031.3558.0	device connector GST18I3S B1 GN07	geis® CLASSIC device connector, built-in component, single screw connection, number of poles 3, model female, connection type screw connection, rated voltage 250 V, rated current 20 A, color of coding/ contact carrier may green
92.031.3958.0	device connector GST18I3S B1 TB06	geis® CLASSIC device connector, built-in component, single screw connection, number of poles 3, model female, connection type screw connection, rated voltage 250 V, rated current 20 A, color of coding/ contact carrier turquoise blue
92.031.3758.0	device connector GST18I3S B1 PB04	geis® CLASSIC device connector, built-in component, single screw connection, number of poles 3, model female, connection type screw connection, rated voltage 250 V, rated current 20 A, color of coding/ contact carrier pastel blue
92.031.0458.0	device connector GST18I3L B1V PB04	geis® CLASSIC device connector, solder connector, vertical, without fastening flange, number of poles 3, model female, connection type soldering connection, rated voltage 250 V, rated current 20 A, color of coding/ contact carrier pastel blue

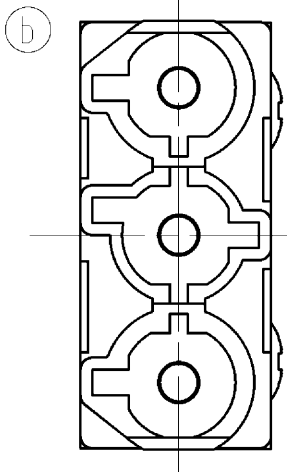
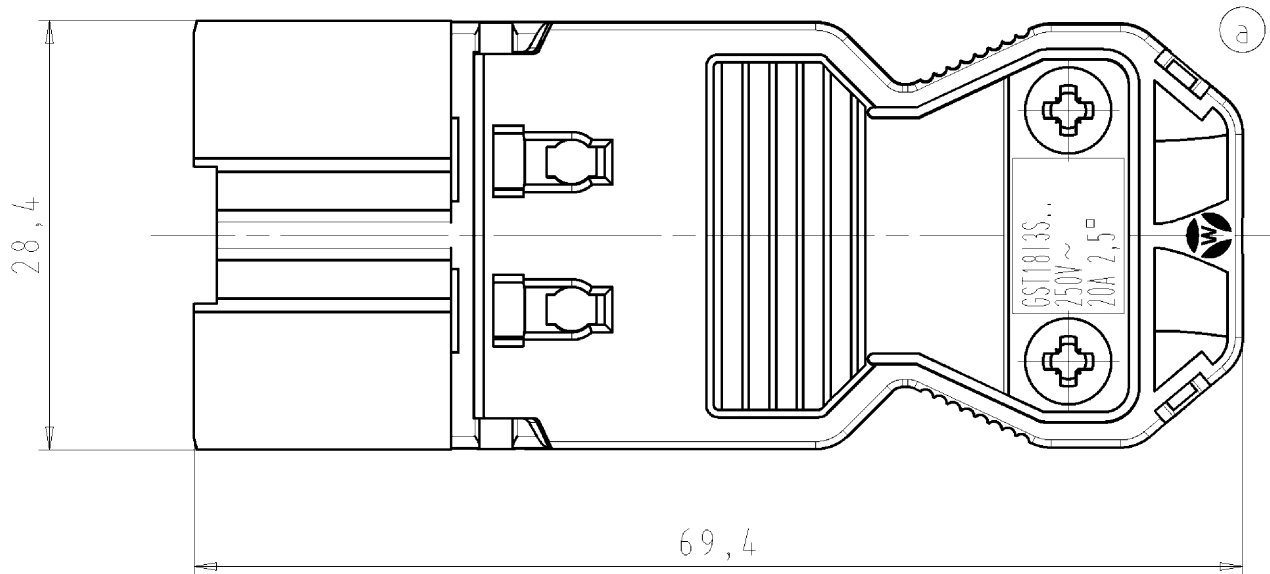
These dimensions will be especially checked at delivery
Only inspection dimensions
With /E marked dimensions are only valid for internal use

Diese Maße werden bei Abnahme besonders geprüft
Ausschließliche Prüfmaße
Mit /E gekennzeichnete Maße sind nur für interne Zwecke gültig

M 1:1

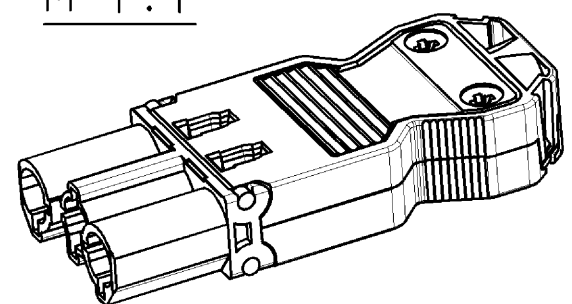


Ansicht in Pfeilrichtung X im montiertem Zustand
view in arrow direction X, drawn in assembled condition



Weitere Daten siehe Katalog
further data see catalog

Teile-Nr. part-no	Farbe colour	Typ type
92.932.3053.0	weiß white	GST1813S S1 ZR1 WS
92.932.3053.1	schwarz black	GST1813S S1 ZR1 SW



Tolerierung Size ISO 14405/Tolerance system Size ISO 14405. (This ISO-standard describes the envelope principle. According to the envelope principle the deviations of form and parallelism are limited by the size tolerances).				ja/yes <input checked="" type="checkbox"/> Stoffverbots- und Deklarationsliste nach UU-TQM-05/03 ist einzuhalten. Conformity with Wieland document UU-TQM-05/03 (list of prohibited / dearable hazardous substances) to be declared!			
Freitoleranz nach General tolerance		CAD - Zeichnung, keine manuellen Änderungen CAD - drawing, no manual modifications allowed		1. Verwendung: First Use:		Blatt: 1 von 1 Sheet: of	
/		Werkstoff/Material		2005 Tag/Date		Name	
/				gezeichnet drawn		22.09. Schmitt J.	
/		Maßstab/Scale		geprüft checked			
/		X		Normgepr. Stand. check			
/		Vol. mm³ Ofl./Surf. mm²		Ersatz für/Replacement for: -			
b 21.01.2013/		a 22.10.2012/		Type		Benennung/Title	
Index Datum / Blatt Date / Sheet		Änderung/Revision		s. Tabelle see table		MALE CONNECTOR WITH STRAIN RELIEF STECKERTEIL MIT ZUGENTLASTUNG	
		wieland				Install.-Steckverb. m. Schraubanschl./connector with screw connection a 250V AC 20A 2,5qmm	
		Elektrische Verbindungen					

Weitergabe sowie Vervielfältigung dieses Dokuments, Verwertung und Mitteilung
seiner Inhalte sind verboten, soweit nicht ausdrücklich gestattet.
The reproduction, distribution and utilization of this document as well as the
communication of its contents to others without express authorization is prohibited.