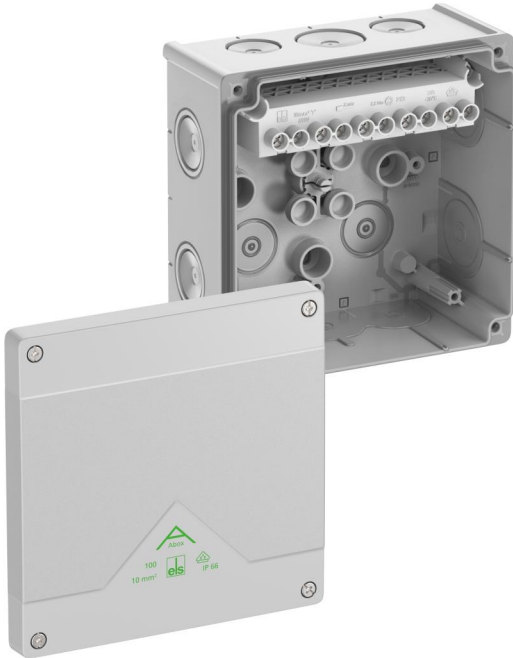


Junction box

# Abox 100-10<sup>2</sup>



## Abox 100-10<sup>2</sup>

Junction box

**CUSTOMIZABLE**

Productnumber: 81042001

Dimensions: 152 x 152 x 80 mm

Junction box, protection class IP66, nominal cross-section 10 mm<sup>2</sup>, certified by VDE (DIN EN 60670-1/-22 (VDE 0606-1/-22)), DLG (Ammonia resistance), self-sealing, soft insertion membranes, M20/M25/M32, sealing range 8 - 28 mm, (2 rear, 10 side), internal fixing points, for standard indoor and protected outdoor installations

**grey, U<sub>i</sub>=690 V AC, I<sub>n</sub>=57 A, with raised screw terminal block, 5-pole, max. cross-section acc. DIN EN 60998: 10 mm<sup>2</sup>, clampable cross-sections per pole: 4 x 2.5 mm<sup>2</sup>, 4 x 4 mm<sup>2</sup>, 4 x 6 mm<sup>2</sup>, 4 x 10 mm<sup>2</sup>, 2 x 16 mm<sup>2</sup> rigid Cu/flexible with wire-end ferrule**



## Technical Data

### electrical characteristics

Rated insulation voltage AC:	690 V
Rated insulation voltage DC:	690 V
Min. conductor cross section:	2,5 mm <sup>2</sup>
Max. conductor cross section:	10 mm <sup>2</sup>
Protection class:	II
Type of protection:	IP66
Rated current:	57 A
Terminal type:	Screw terminal
Number of poles:	5

### Colours

Base unit colour:	grey
Cover colour:	grey

### Dimensions

Width:	152 mm
Length:	152 mm
Height:	80 mm
Inner length:	139 mm
Inner width:	140 mm
Inner height:	64 mm
Weight:	0.414 kg

### Material characteristics

UV-resistant:	yes
Halogen free:	yes
Flammability class according with UL94:	HB
Glow-wire flammability according to EN 60695-2-11:	750 °C

### mechanical properties

for sealing range min:	8 mm
for sealing range max:	28 mm
Impact strength:	IK07
Sealable:	yes
Cover screw torque:	1.2 Nm
Type of fastening:	Wall/ceiling mounting
Fastening:	internal fixing points

### Ambient conditions

max. relative humidity 25°C:	95 %
max. relative humidity 40°C:	50 %
Min. ambient temperature:	-25 °C
Max. ambient temperature:	55 °C
24h ambient temperature:	35 °C
Installation location:	protected outdoor areas

### Sales Information

EAN:	4013902660483
ETIM Class:	EC002600
Custom tariff number:	85369095

### Material

Base unit material:	Polypropylene
Cover material:	Polypropylene
Entry material:	Thermoplastic elastomer
Sealing material:	Thermoplastic elastomer
Cover screw material:	Stainless steel V2A

### Certificates

Test mark:	VDE (DIN EN 60670-1/-22 (VDE 0606-1/-22))
Test mark:	DLG (Ammonia resistance)

## Accessories

[22742001 - KVR M20-MGM - Cable gland](#)

[22742101 - KVR M20-GDB/MGM - Cable gland](#)

[22742501 - KVR M25-MGM - Cable gland](#)

[22743201 - KVR M32-MGM - Cable gland](#)

[26042001 - DMS M20 - Double-membrane seals](#)

[26042501 - DMS M25 - Double-membrane seals](#)

[26043201 - DMS M32 - Double-membrane seals](#)

[89500101 - Abox PST 025-100 - Sealing kit](#)

[89511001 - Abox MPI 100 - Mounting plate](#)

[89531001 - Abox 100 NS35 - Standard rail](#)

[89600501 - Abox 100 KH 221 6<sup>2</sup> - Terminal holder](#)

[89600601 - Abox 100 KH 2006 6<sup>2</sup> - Terminal holder](#)

[89641001 - Abox 100 KLS-10<sup>2</sup> - Terminal block](#)

[89602001 - MABF 100-1 - Mast/pipe fixing set](#)

## Cable gland

