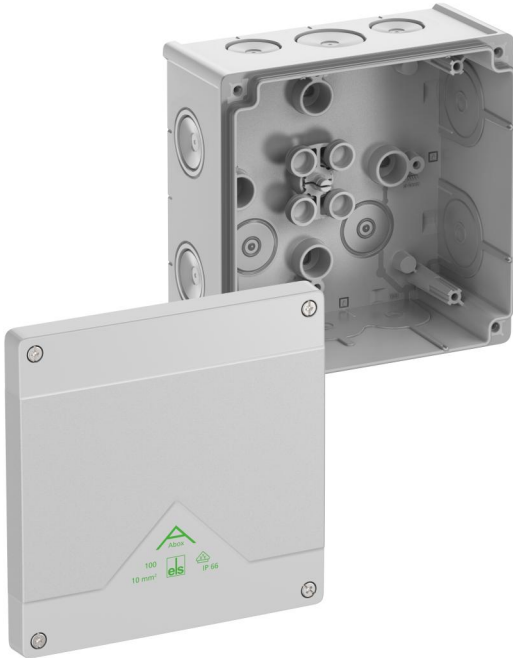


Junction box

Abox 100-L



Abox 100-L

Junction box

CUSTOMIZABLE

Productnumber: 81040001

Dimensions: 152 x 152 x 80 mm

Junction box, protection class IP66, nominal cross-section 10 mm², certified by VDE (DIN EN 60670-1/-22 (VDE 0606-1/-22)), DLG (Ammonia resistance), self-sealing, soft insertion membranes, M20/M25/M32, sealing range 8 - 28 mm, (2 rear, 10 side), internal fixing points, for standard indoor and protected outdoor installations

grey, Ui=1000 V AC, without terminals



Technical Data

electrical characteristics

Rated insulation voltage AC:	1000 V
Rated insulation voltage DC:	1000 V
Max. conductor cross section:	10 mm ²
Protection class:	II
Type of protection:	IP66
Terminal type:	none

Colours

Base unit colour:	grey
Cover colour:	grey

Dimensions

Width:	152 mm
Length:	152 mm
Height:	80 mm
Inner length:	139 mm
Inner width:	140 mm
Inner height:	64 mm
Weight:	0.282 kg

Material characteristics

UV-resistant:	yes
Halogen free:	yes
Flammability class according with UL94:	HB
Glow-wire flammability according to EN 60695-2-11:	750 °C

Max. number of terminals per cross section acc. to DIN VDE 0606-1

max. amount of terminals at 1,5 ² :	15
max. amount of terminals at 2,5 ² :	12

Max. number of terminals per cross section acc. to DIN VDE 0606-1

max. amount of terminals at 4 ² :	10
max. amount of terminals at 6 ² :	8
max. amount of terminals at 10 ² :	5

Max. number of wires per cross section acc. to DIN VDE 0606-1

max. amount of wires at 1,5 ² :	45
max. amount of wires at 2,5 ² :	36
max. amount of wires at 4 ² :	30
max. amount of wires at 10 ² :	24
max. amount of wires at 6 ² :	15

mechanical properties

for sealing range min:	8 mm
for sealing range max:	28 mm
Impact strength:	IK07
Sealable:	yes
Cover screw torque:	1.2 Nm
Type of fastening:	Wall/ceiling mounting
Fastening:	internal fixing points

Ambient conditions

max. relative humidity 25°C:	95 %
max. relative humidity 40°C:	50 %
Min. ambient temperature:	-25 °C
Max. ambient temperature:	55 °C
24h ambient temperature:	35 °C
Installation location:	protected outdoor areas

Sales Information

EAN:	4013902660544
ETIM Class:	EC002600
Custom tariff number:	85389099

Material

Base unit material:	Polypropylene
Cover material:	Polypropylene
Entry material:	Thermoplastic elastomer
Sealing material:	Thermoplastic elastomer
Cover screw material:	Stainless steel V2A

Certificates

Test mark:	VDE (DIN EN 60670-1/-22 (VDE 0606-1/-22))
Test mark:	DLG (Ammonia resistance)

Accessories

- [22742001 - KVR M20-MGM - Cable gland](#)
- [22742101 - KVR M20-GDB/MGM - Cable gland](#)
- [22742501 - KVR M25-MGM - Cable gland](#)
- [22743201 - KVR M32-MGM - Cable gland](#)
- [26042001 - DMS M20 - Double-membrane seals](#)
- [26042501 - DMS M25 - Double-membrane seals](#)
- [26043201 - DMS M32 - Double-membrane seals](#)
- [89500101 - Abox PST 025-100 - Sealing kit](#)
- [89511001 - Abox MPI 100 - Mounting plate](#)
- [89531001 - Abox 100 NS35 - Standard rail](#)
- [89600501 - Abox 100 KH 221 6² - Terminal holder](#)
- [89600601 - Abox 100 KH 2006 6² - Terminal holder](#)
- [89641001 - Abox 100 KLS-10² - Terminal block](#)
- [89602001 - MABF 100-1 - Mast/pipe fixing set](#)

Cable gland

