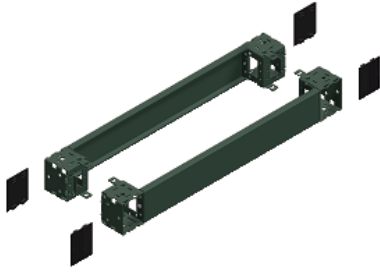


Product datasheet

Specifications



Spacial SF front plinth - 100x400 mm

Local distributor code: 398323169 NSYSPF4100

EAN Code : 3606485126555

Main

Range	Spacial
Accessory / separate part category	Enclosure accessory
Product or component type	Plinth front
Anwendung	Multi-purpose
Nennmaße des Gehäuses	-
Device composition	fixing elements 4 corner cover 1 front panel 1 rear panel 4 corner
Range compatibility	Spacial (Spacial SF) Spacial (Spacial SM)
Mounting support	Plinth side panels

Complementary

Fixing mode	By fixing element - on structure location
Colour	Grey (RAL 7022)
Surface finish	Epoxy-polyester powder
Permanent permissible load	1300 kg
Height	100 mm
Width	400 mm nominal:

Environment

IP degree of protection	IP30 (complete plinth)
IK degree of protection	IK10

Packing Units

Unit Type of Package 1	PCE
Number of Units in Package 1	1
Package 1 Height	11.0 cm
Package 1 Width	20.5 cm
Package 1 Length	41.5 cm

Package 1 Weight	3.531 kg
------------------	----------

Offer Sustainability

Sustainable offer status	Green Premium product
REACH Regulation	REACH Declaration
REACH free of SVHC	Yes
EU RoHS Directive	Pro-active compliance (Product out of EU RoHS legal scope) EU RoHS Declaration
Mercury free	Yes
RoHS exemption information	Yes
China RoHS Regulation	China RoHS declaration Product out of China RoHS scope. Substance declaration for your information
Environmental Disclosure	Product Environmental Profile

Contractual warranty

Warranty	18 months
----------	-----------