

## Data sheet

Art.No.: 92.041.3253.0

Device connector GST18i4S B1 WS

GST18i4 built-in component, 4 pole, female with screw connection, coding mains 250 V/ 400 V, 20 A, coding color white



|            |               |
|------------|---------------|
| Art.No.    | 92.041.3253.0 |
| EAN        | 4015573545915 |
| Order Unit | 1             |

Certificates / Approvals



## Technical data

### General

|                                  |                                  |
|----------------------------------|----------------------------------|
| Rated current                    | 20 A                             |
| Rated voltage                    | 250 V / 400 V                    |
| Pollution degree                 | 2                                |
| Mechanical coding                | Code 1                           |
| Rated impulse voltage            | 4 kV                             |
| Lockable                         | self-locking (unlocking by tool) |
| Color of coding/ contact carrier | white                            |
| Marking of poles                 | 2, N, PE, 1                      |

### Connection Data

|   |                      |
|---|----------------------|
| Connection cross section solid mm <sup>2</sup> max.         | 4 mm <sup>2</sup>    |
| Connection cross section solid mm <sup>2</sup> min.         | 0.75 mm <sup>2</sup> |
| Connection cross section fine stranded mm <sup>2</sup> max. | 4 mm <sup>2</sup>    |
| Connection cross section fine stranded mm <sup>2</sup> min. | 0.75 mm <sup>2</sup> |
| Terminations per pole                                       | 1                    |
| Wire strip length   | 7 mm                 |

### Model

|                              |   |
|------------------------------|---|
| Model                        | female  |
| Connection type              | Screw connection  |
| Angle of plug                | straight  |
| Degree of protection (IP)    | IP20  |
| Remark to type of connection | Fine stranded wires 4 mm <sup>2</sup> only without ferrules |
| built-in component           | Built-in component/connector                                |

### Material

|                  |           |
|------------------|-----------|
| Housing material | Polyamide |
|------------------|-----------|

|  |            |
|--|------------|
| halogen free                                 | Yes        |
| Contact material                             | CuZn       |
| Fire load                                    | 0.047 kWh  |
| Insulation components continuous temperature | 100 °C     |
| Surface finish                               | Tin-plated |

#### Dimensions

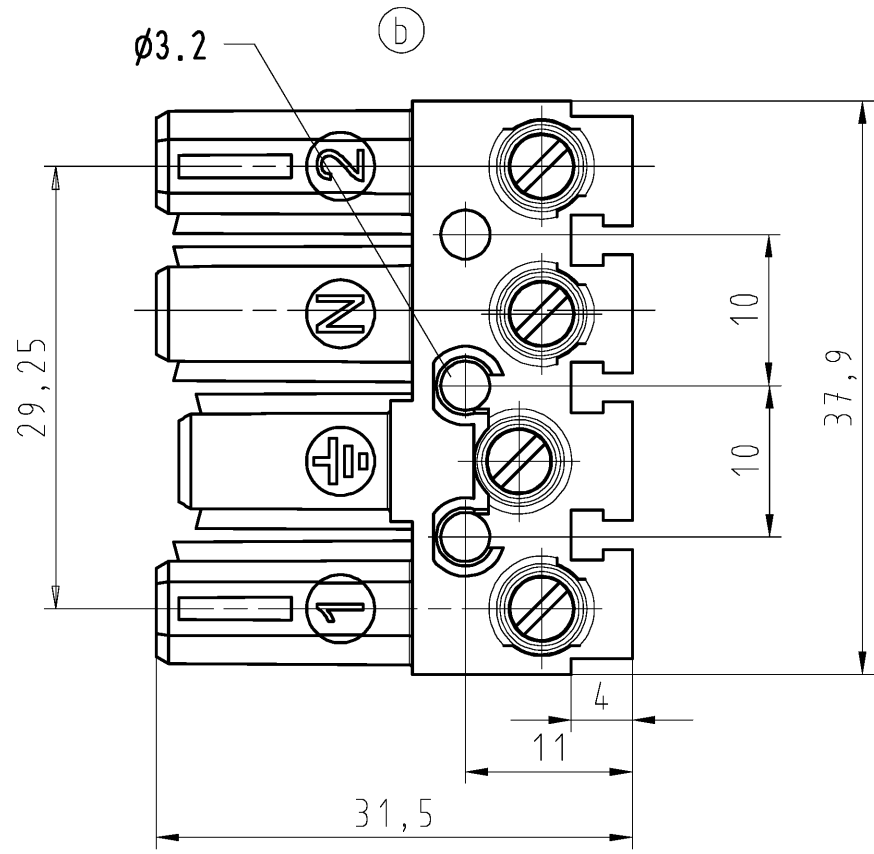
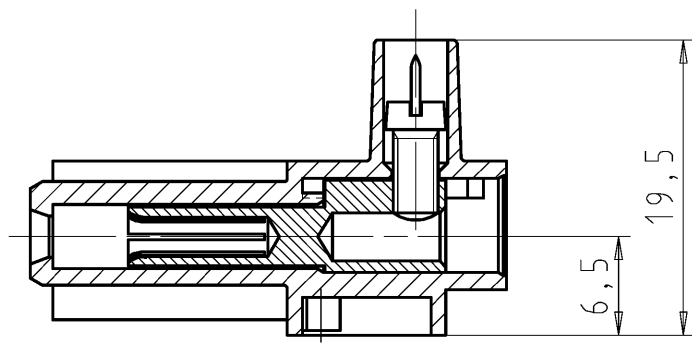
|        |         |
|--------|---------|
| Length | 31.5 mm |
| Width  | 38 mm   |
| Height | 19.5 mm |

#### Classification

|            |          |
|------------|----------|
| ECLASS 8.1 | 27440602 |
| ETIM 7.0   | EC002566 |
| ETIM 6.0   | EC002566 |
| ETIM 5.0   | EC002566 |
| ETIM 4.0   | EC002566 |

#### Accessories

| Art.No.:      | Article/type description:       | Description:  |
|---------------|---------------------------------|---|
| 05.564.5353.0 | cover cap GST18i3/4/5 SW        | Cover piece 12 pole black for female parts GST18i3-6  |
| 05.564.5353.2 | cover cap GST18i3/4/5 WS        | Cover piece 12 pole white for female parts GST18i3-6  |
| 05.566.9153.0 | cover cap GST18i4 BUCHSEN       | Cover for female connectors GST18i4, black  |
| 34.300.1122.1 | Mounting sheet GST18 3-10 POLIG | Mounting bracket to fix one or two GST18 device connectors. 3-10 poles possible. Can be fixed to the housing with screws or rivets. |



These dimensions will be especially checked at delivery  
 Only inspection dimensions  
 With /E marked dimensions are only valid for internal use

Diese Maße werden bei Abnahme besonders geprüft  
 Ausschließlich Prüfmaße  
 Mit /E gekennzeichnete Maße sind nur für interne Zwecke gültig

Weitergabe sowie Vervielfältigung dieses Dokuments, Verwertung und Mitteilung seines Inhalts sind verboten, soweit nicht ausdrücklich gestattet. Die Reproduktion, Distribution und Utilization of this document as well as the communication of its contents to others without express authorization is prohibited.

Weitere Daten siehe Katalog  
 further data see catalog

| Teile - Nr.<br>part - no. | Farbe<br>colour  | Typ<br>type    |
|---------------------------|------------------|----------------|
| 92.041.3253.0             | weiß<br>white    | GST1814S B1 WS |
| 92.041.3253.1             | schwarz<br>black | GST1814S B1 SW |

Tolerierung Size ISO 14405(E)/Tolerance system Size ISO 14405(E).  
 (This ISO-standard describes the envelope principle. According to the envelope principle the deviations of form and parallelism are limited by the size tolerances).

ja/yes  Stoffverbots- und Deklarationsliste nach WN 5020.010 ist einzuhalten.  
 Conformity with Wieland document WN 5020.010 e (list of prohibited / declarable hazardous substances) to be declared!

Freitoleranz nach  
 General tolerance

CAD - Zeichnung, keine manuellen Änderungen  
 CAD - drawing, no manual modifications allowed

1.Verwendung:  
 First Use: -

Blatt: 1 von 1  
 Sheet: 1 of 1

|                                 |                               |                          |                    |                           |  |                               |                           |       |
|---------------------------------|-------------------------------|--------------------------|--------------------|---------------------------|--|-------------------------------|---------------------------|-------|
|                                 | /                             |                          | Werkstoff/Material | 2004                      | Tag/Date                                     | Name                          | Zeichnung Nr./Drawing No. | Index |
|                                 | /                             |                          |                    | gezeichnet<br>drawn       | 08.12.                                       | Treschan                      |                           |       |
|                                 | /                             | Maßstab/Scale<br>2:1     |                    | geprüft<br>checked        | -  | -                             | T 92.041.3253.0 01K b     |       |
|                                 | /                             |                          |                    | Normgepr.<br>Stand. check | -  | -                             |                           |       |
| Maße in mm/Dimensions are in mm |                               |                          |                    |                           |  |                               |                           |       |
|                                 | /                             | Vol.                     | mm <sup>3</sup>    | Of1./Surf.                | mm <sup>2</sup>                              | Ersatz für/Replacement for: - |                           |       |
| b                               | 13.08.2015/                   |                          |                    |                           | Type   | Benennung/Title               |                           |       |
| a                               | 02.01.2013/                   |                          |                    |                           | BUCHSENTE IL                                 |                               |                           |       |
| Index                           | Datum / Blatt<br>Date / Sheet | www.wieland-electric.com |                    |                           | female connector<br>250/400V AC, 20A, 2,5qmm |                               |                           |       |
| Änderung/Revision               |                               |                          |                    |                           | (a)  |                               |                           |       |